

PRIDE, HAPPINESS, AMBITION

**A Warm Welcome  
to you all from  
The Leadership Team**



*The* HENRY  
BEAUFORT *School*



The Henry Beaufort School



Henry Beaufort School is a secondary school in Harestock, a suburb of Winchester, in the county of Hampshire in England.



The Henry Beaufort School, Priors Dean Rd, Winchester SO22 6JJ



3MJ9+9X Winchester



Save to project

PRIDE, HAPPINESS, AMBITION

**A Warm Welcome  
to you all from  
The Leadership Team**

# Congratulations on gaining a place at the Henry Beaufort School

Our standards are high  
Our expectations consistent

The value of knowing our students as individuals is of paramount importance to The Henry Beaufort School Community.

Happy, fulfilled independent learners are also successful learners and successful members of society.

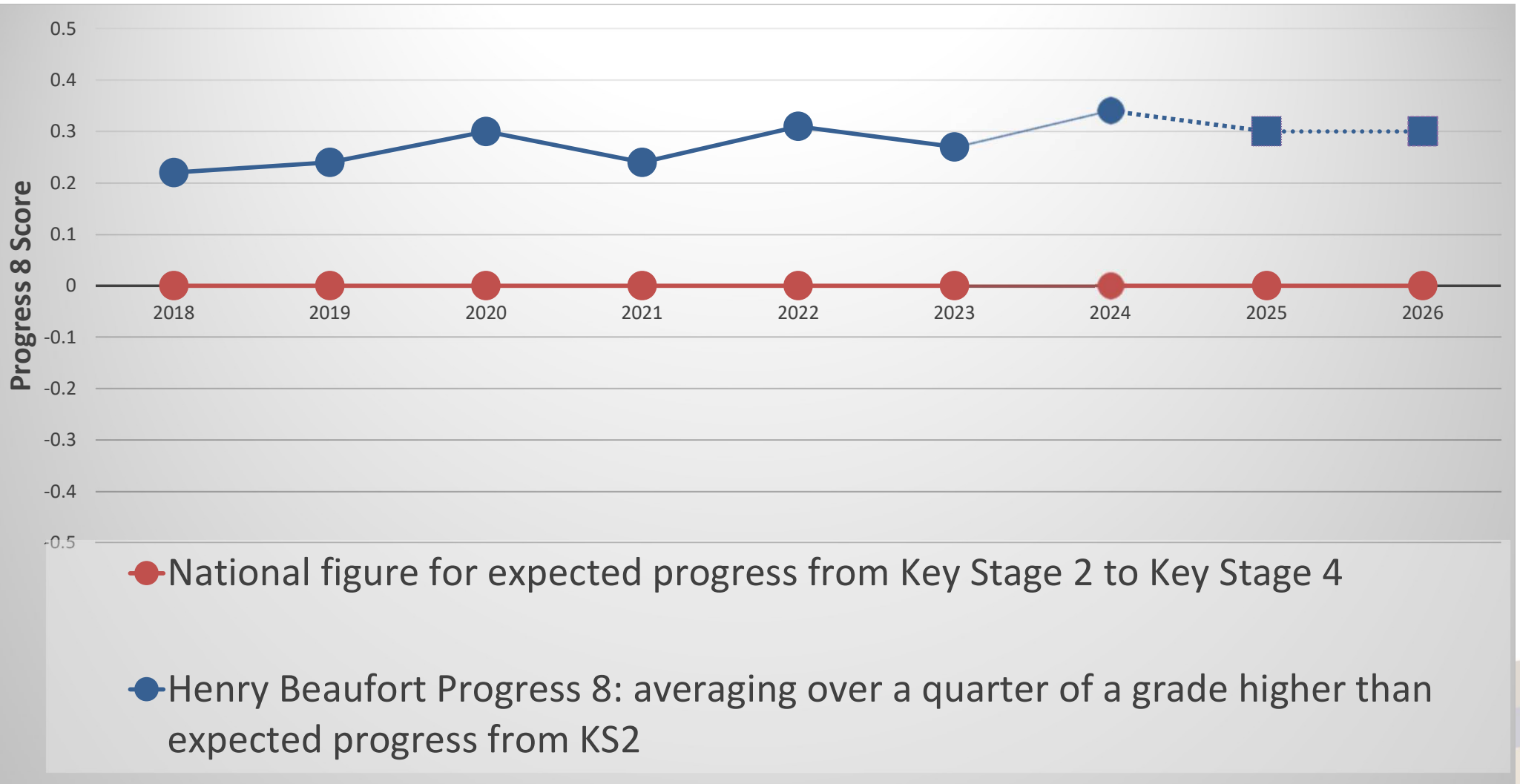


*‘Pride, Happiness, Ambition’*

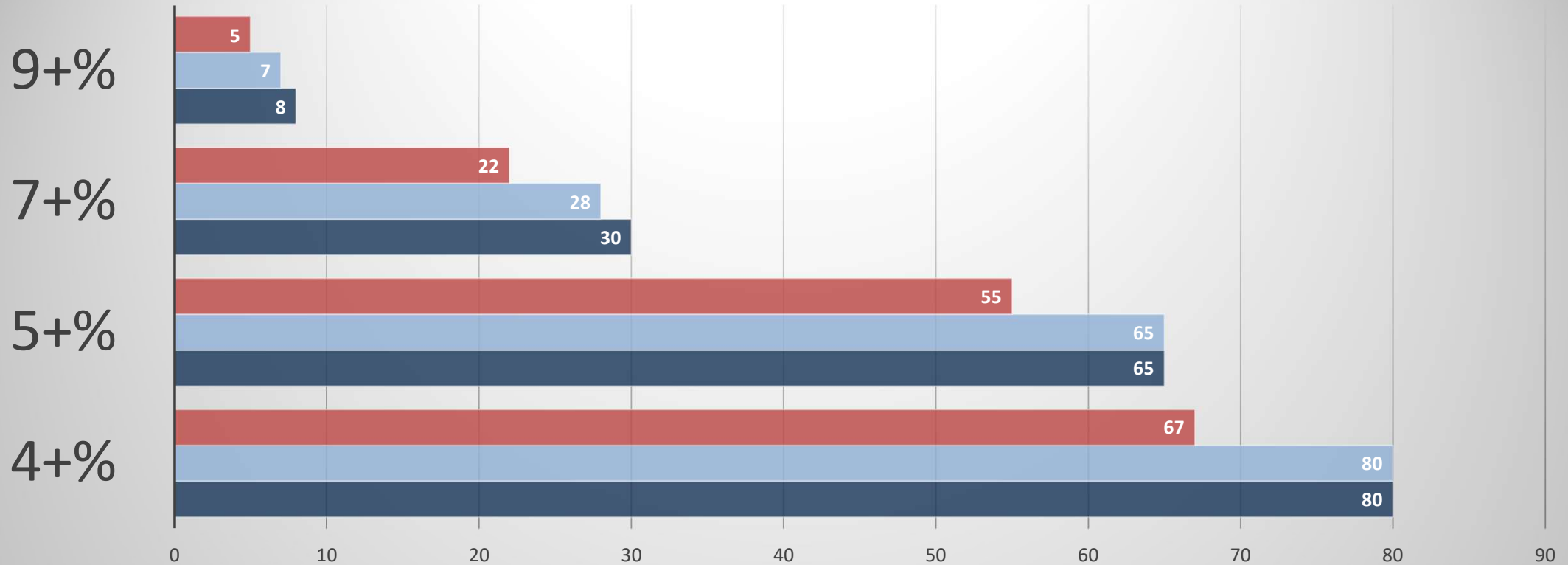


The HENRY  
BEAUFORT School

# Progress Trend Henry Beaufort 2018-2024



# Attainment Trend- Henry Beaufort v National Average



- National Average (4+)
- Henry Beaufort Average 23 (5=)/ 24 (5+)/ 25 (5+)
- Henry Beaufort 2025 (5+)

# A school in the National Top 20% of all Schools

And this is why:

- ✓ Attendance
- ✓ English A8: Top 12% nationally
- ✓ Overall A8: Top 19% nationally
- ✓ English (Grade4+ and 5+): Top 15% nationally
- ✓ Maths (Grade 4+ and 5+): Top 22% nationally
- ✓ Science (Grade 5+): Top 18% nationally
- ✓ Humanities (Grade 4+ and 5+): Top 17% nationally
- ✓ Languages (Grade4+ and 5+): Top 17% nationally

Across the 30 subjects, the average grade was 5+,

- 3.4% of our students achieved Grade 9 in 7 or more subjects
- 78% of our students achieved a Grade 5 in English or Maths.
- 41% of our students achieved a grade 7 or higher in English or Maths.
- 65% of students study the three separate disciplines of Biology, Chemistry and Physics
  
- HB's unique Engineering GCSE, an offer not found elsewhere in the local area, delivered excellent results: 70% at Grade 5 or better and 31% at Grade 7 or above.
- We offer Further Math's with 42% of students attaining a Grade 9 to prepare them for studying Math's at A-level.

# Student Performance

English and maths grade 5	National Average	Henry Beaufort	Comparison to National
24/25	45.4	54.6	+9.2% (well above)
23/24	45.9	60.2	+14.3% (Significantly above)
22/23	45.3	56.9	+11.6 (well above)

Attainment 8	National Average	Henry Beaufort	Comparison to National
24/25	46.0	50.5	+4.5 (above average)
23/24	45.9	53.3	+7.4 (well above)
22/23	46.3	50.8	+4.5 (above average)

Progress 8	National Average	Henry Beaufort	Comparison to National
23/24	-0.03	0.34	Well above
22/23	-0.03	0.27	Well above
21/22	-0.03	0.31	Well above

PRIDE, HAPPINESS, AMBITION

# Year 11 Speakers

PRIDE, HAPPINESS, AMBITION

# Our Curriculum

# The Intention of our 5-year Curriculum

- We pride ourselves on providing opportunities for every student to follow a broad and balanced curriculum.
- We are ambitious for all students, and they follow a curriculum that challenges their learning.
- We know that success comes from enjoyment and engagement.
- The values of our curriculum encompass a well-sequenced academic journey that includes
  - cultural capital experiences,
  - personal development opportunities,
  - careers,
  - character development,
  - critical thinking,
  - Social, Moral, Spiritual and Cultural,
  - and British Values.

# Five Year Curriculum Journey

We are proud of our well-established and sustainable five-year curriculum.

Hours per fortnight	English	Maths	Science	History	Geography	RE	Relationship & Sex	Languages	Technology Rotations	IT	PE	Art	Drama	Music	Option Block A	Option Block B	Option Block C	Option Block D	Total
Year 7	6	6	6	3	3	2		6	4	1	4	3	3	3					50
Year 8	7	7	7	3	3	2		6	4	1	4	2	2	2					50
Year 9	8	8	8			2				1	3				5	5	5	5	50
Year 10	9	9	9				1				2				5	5	5	5	50
Year 11	9	9	9								3				5	5	5	5	50

Our curriculum is underpinned by 'student voice' and what students feedback to senior and middle leaders about their experiences. This informs curriculum development to ensure it supports student outcomes, building knowledge and skills.

# Our Curriculum

In Year 7 and Year 8, all students study English, Maths, Science, Geography, History, RE, a Language, Design and Technology, Art, Music, Drama, IT and PE.

Students make their option choices in Year 8, ready for September of Year 9. During Year 8, students and parents receive a wide range of guidance around the best choices for them as individuals.

Then in Year 9, every student studies their core curriculum of English, Maths and Science, complemented by their 4 options choices. Every student continues with Core PE, RE and RSE lessons.

## Currently, in Year 9 we offer 17 options:

### Languages

GCSE French  
GCSE German  
GCSE Spanish

### Technology

GCSE Engineering  
GCSE Food  
GCSE Computer Science  
GCSE Design and Technology

### Humanities

GCSE Geography  
GCSE History  
GCSE RE

### Arts

GCSE Art  
GCSE Photography  
GCSE Music  
GCSE Drama  
GCSE PE

### Vocational

CNC Child Development  
CNC Health and Social Care

### Core

Maths  
English  
Science  
RE  
IT  
PE



# What do we do for our highest attainers?

## Curriculum

Our Curriculum offer has a number of subjects to 'stretch and challenge' our most able learners. GCSE Computing, GCSE Engineering and GCSE Statistics are our most challenging GCSEs that demand a very high competency of maths.

## Subjects

Every subject has elements to offer opportunities to our high attaining and gifted and talented students. These include: Poetry Live, Engineering Powerboat Challenge, Geographical Association Enrichment Lectures, Computing Cyber Ambassadors, learning Mandarin, Sports Captains in PE, bi-annual whole school production at Winchester Theatre Royal and UK Maths Challenge with Winchester College.

## Post-16 and Post-18 Pathways

The Further Education Fair supports all students in choosing what's next for them after Henry Beaufort. In the Autumn Term from Year 9, representations are made by Peter Symonds, QMC, Winchester College, BCOT, Andover College, and Sparsholt College, at an event where students can engage and begin their decision-making through talking to each college face-to-face.

We are also affiliated with St Hilda's College Oxford University, and every year the highest attaining Year 10 students attend The Oxford University Roadshow event followed by a visit to St Hilda's College Oxford, in order to begin thinking about their future pathways.

We have also recently launched 'ReadAround' which are a bank of texts recommended to support students' interests in specific subjects in preparation for A-Level and University study.

PRIDE, HAPPINESS, AMBITION

# Our Extended Curriculum and Cultural Capital

# Curriculum Extension

The Henry Beaufort School offers an extensive extra-curricular programme to ensure that all students have access to enriching activities that can broaden students' horizons and provide students with skills that they can use in the future.

Extra-Curricular Activities after school include:

- Sports (both for recreation and competition)
- Environmental Club
- Cooking
- STEM
- Mandarin
- Science Club
- Chess Club
- Orchestra, Jazz Band, Resonate Choir
- Performing Arts (including performances at the Theatre Royal)
- Beaufort Book Society
- Debate Club



# Enrichment opportunities

Throughout the year there are trips that link to curriculum for all year groups.

Every year we have an organised Enrichment Week programme for students from Years 7-9. A variety of activities are offered in school and in the local area and opportunities for residential experiences.

Year 10 have the unique opportunity to complete a week of Work Experience.

## Enrichment Week example:

- Sandbanks
- Berlin
- France (Opal Coast)
- Disney Land Paris
- Sports Week
- Saints Coaching
- Underwater Art
- Lego Animation
- Film Making
- Feathers and Fur
- Magical Worlds and Words
- Beaufort Masterchef
- Year 7 Camp



# Student experiences

Our Year 7 Students have had the opportunity to do the following:

- Christmas Carol Production
- Southampton Art Gallery
- SeaCity Museum
- LegoLand (STEM)
- Winchester Science Museum
- Year 7 Camp at Tile Barn



# hbX and Cultural Capital

Cultural Capital at The Henry Beaufort School is **AMBITIOUS, CHALLENGING, SUPPORTIVE** and **ENRICHING**.

Take part in an adventurous or challenging activity.

Visit a national or local gallery, museum or heritage site.

Attend a professional sporting event.

Attend a professional cultural performance (play, musical, opera, dance).

Attend an event in school to meet a person/people that can widen our knowledge of the world we live in.

Attend a Careers or Further Education related experience.



hbX

*The Henry Beaufort School*  
Experiences Year 7 - 11

		What and When	Agreed by
1	Take part in a residential experience.		
2	Take part in an adventurous or challenging activity.		
3	Perform or present to an audience in or out of school or represent the school in an event.		
4	Attend a professional cultural performance (play, musical, opera, dance).		
5	Attend an event in school to meet a person/people that can widen our knowledge of the world we live in.		
6	Attend a professional sporting event.		
7	Visit a national or local gallery, museum or heritage site.		
8	Visit a place of worship in order to gain an understanding of the different cultures within our own society.		
9	Take part in a work related experience.		
10	Attend a Careers or Further Education related experience.		
11	You are regularly involved in a club or organisation either in, or out, of school.		
12	Help others by actively contributing to charity, voluntary work or a community based project either in, or out, of school.		

PRIDE, HAPPINESS, AMBITION

# Pastoral Support

# Student Pastoral Development and Welfare

- Support positive behaviour of students in all aspects of school life.
- Strive for excellent attendance and punctuality.
- Vertical Tutor groups to support the development of all students.
- Maximise the impact on student progress through strong parent and teacher relationships.
- Reward students across the year for their positive contribution.
- Develop leadership potential amongst students.
- Provide a range of opportunities for students to flourish outside of the classroom.



PRIDE, HAPPINESS, AMBITION

# The Transition Process

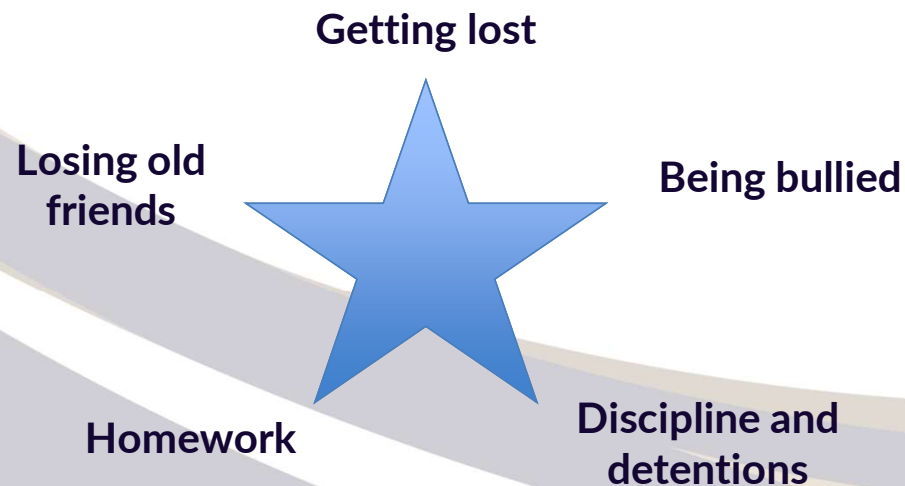
# Transition

Our transition to secondary school is an extremely important time for students, both academically as well as providing pastoral support from the beginning.

## School Transition and Adjustment Research Study (STARS)

'STARS' is a research study based at UCL and Cardiff University which aimed to find out what helps children make a successful move to secondary school.

They asked 2000 young people at the end of Year 6 about their move to secondary school. The five areas that young people were most worried about were...



# Transition

Key focuses for Year 7 include:

- Feeling a sense of belonging to our school
- Learning school routines and systems
- Understanding Home Learning
- Confidence building
- Making new friends and building new relationships
- Working as a team
- Joining after school activities
- Promoting independence

➤ [My self-care plan: secondary \(annafreud.org\)](http://annafreud.org)



*The HENRY  
BEAUFORT School*

PRIDE, HAPPINESS, AMBITION

# Year 7 Speakers

# Transition- Parents next steps

1. Parent access to Arbor from Friday 1<sup>st</sup> May 2026 – all transition information.
2. Information can be found on the 'Transition' area of the school website.
3. After the Easter break you will receive more information about the transition day on Thursday 25<sup>th</sup> June 2026. The parent's information evening follows on the same date.
4. Any concerns, in the meantime, please contact [transition@staff.beaufort.hants.sch.uk](mailto:transition@staff.beaufort.hants.sch.uk) or call 01962 880073 for support

# Key dates

- **May-June 2026 – our visits to primary schools**
- **Thursday 25<sup>th</sup> June 2026– Year 6 Transition Day**
  - **Arrival 09.00**
  - **Finish 14.30**
- **Thursday 25<sup>th</sup> June 2026 – New Parents Intake Evening (parent only event)**
  - **Arrival at 5.45pm**
  - **Starts at 6pm**
- **Thursday 3<sup>rd</sup> and Friday 4<sup>th</sup> September 2026 – Year 7 only for Learning Days.**

**Transition Day in June helps Year 6 students adjust to the significant change of moving from primary to secondary school before the summer holidays.**

**Learning Days in September helps new students settle in and build confidence at Henry Beaufort before the rest of the school returns.**

PRIDE, HAPPINESS, AMBITION

**Thank you for attending**